

# Muzyczne rebusy

Na pięciolinii umieszczone są kolejne nuty, a pod każdą nutą jej nazwa. Wykorzystaj nazwy nut do rozwiązywania muzycznych rebusów. Zapisz utworzone wyrazy.

do re mi fa sol la si do

BE K

---

---

---

---

---

FAA A

---

---

---

---

---

MO O

---

---

---

---

---

NO NO

---

---

---

---

---

KIN

---

---

---

---

---

JKA

---

---

---

---

---

ZA

---

---

---

---

---

LU

---

---

---

---

---

SEK

---

---

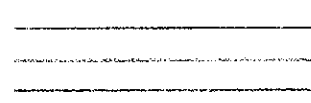
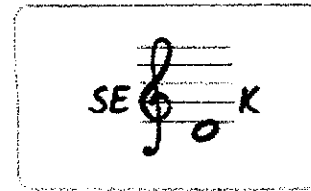
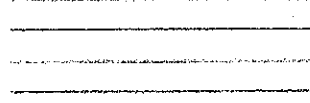
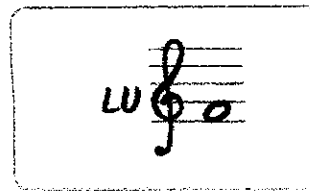
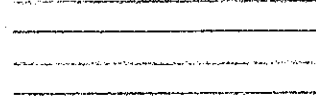
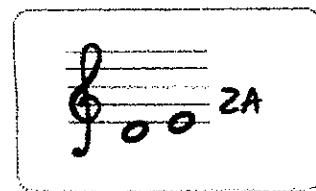
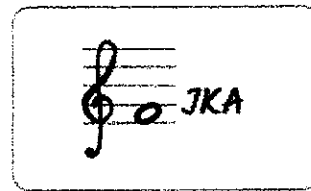
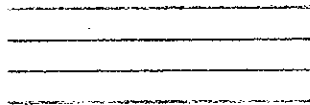
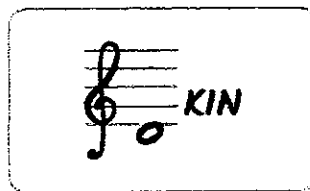
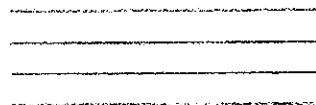
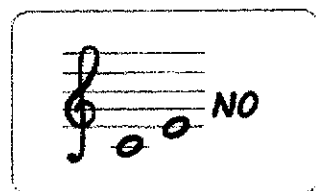
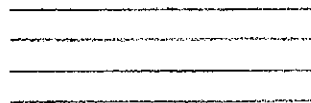
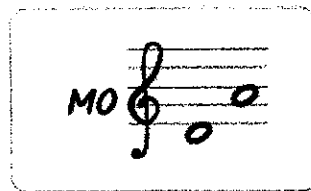
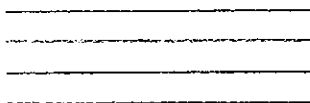
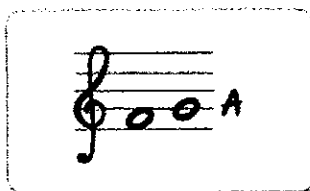
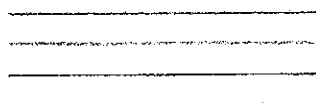
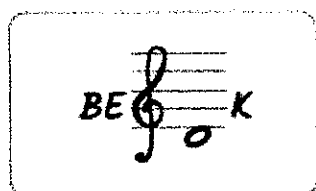
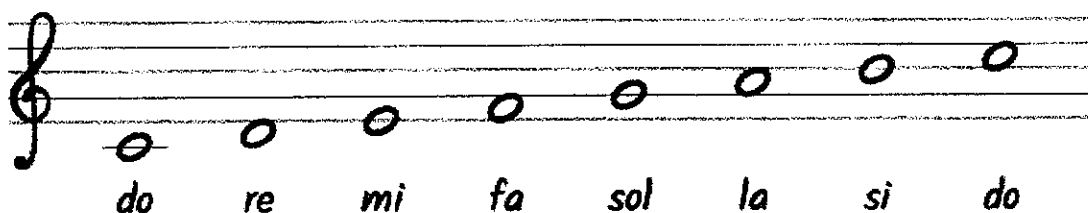
---

---

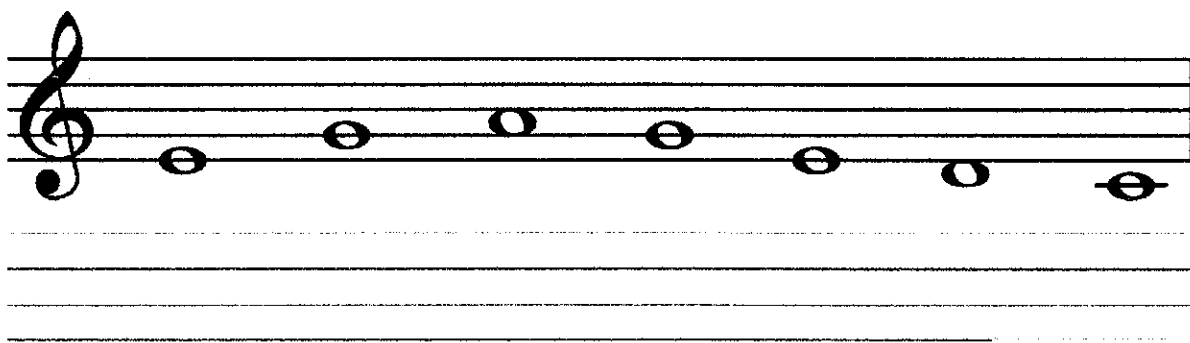
---

# Muzyczne rebusy

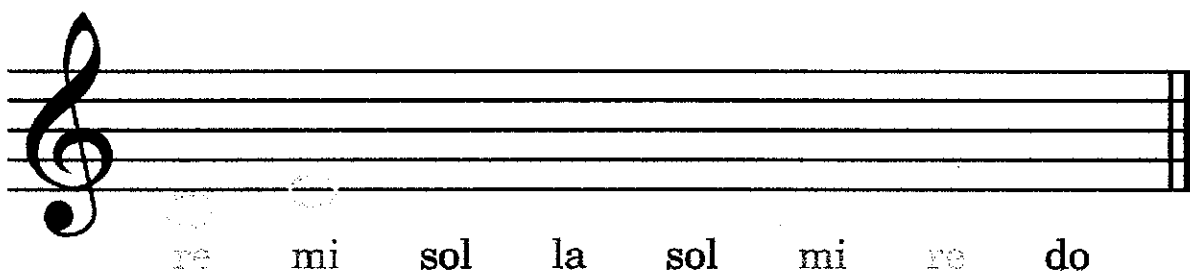
Na pięciolinii umieszczone są kolejne nuty, a pod każdą nutą jej nazwa. Wykorzystaj nazwy nut do rozwiązywania muzycznych rebusów. Zapisz utworzone wyrazy.



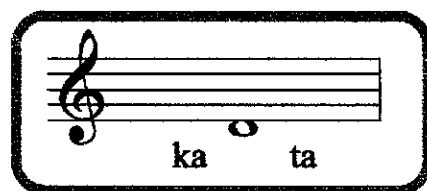
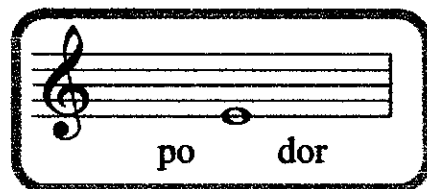
5. Pod nutami zapiszcie ich nazwy. Zaśpiewajcie melodię.



★ 6. Na pięciolinii dopiszcie nuty do podanych nazw. Zaśpiewajcie melodię.



7. Rozwiążcie muzyczne rebusy.



Zabawcie się w echo ruchowe. Przygotujcie paski kolorowej krepiny i stańcie w kręgu. Naśladujcie ruchy, które będą pokazywać nauczyciel i wskazani uczniowie.

